

Digital Band Processor 2:

IDT launches, at an unbeatable price, the latest product in its range

Get a true digital processor



Remote control by software

Introduction to the DBP2

The DBP2 from IDT is, by far, the best value for money audio processor on the market today. It is perfectly suited to all types of format, from CHR to Classical through AC HOT and is particularly aimed at stations where budget is limited but ambition sky high. An incredible number of functions are packed into this IU unit and the price is beyond belief.

Features

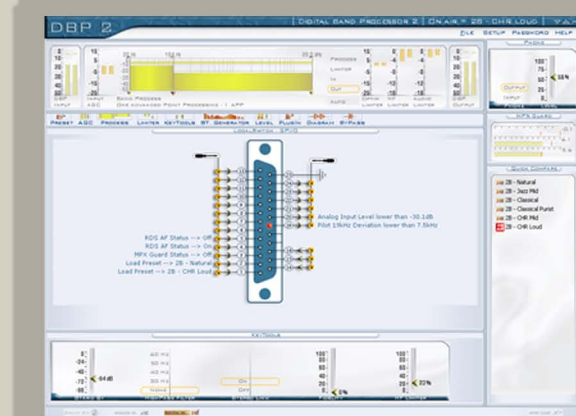
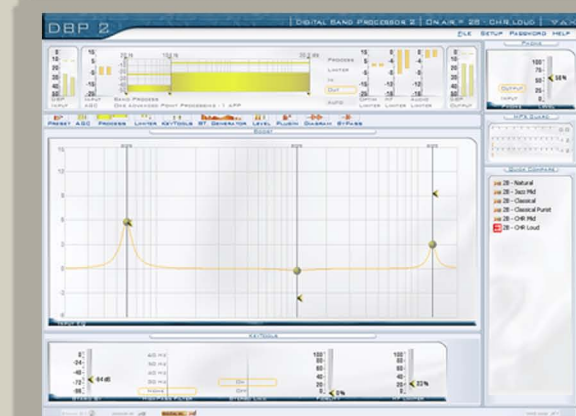
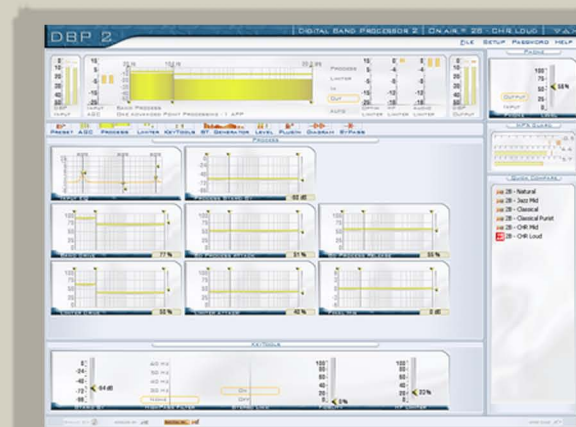
- AGC
- 2 band processing
- Adjustable cross-over frequencies
- 2 band limiter
- Optimizer + final limiter
- APC Concept (Advanced Peak Control)[®] : optimises the work of the clipper, increases loudness and ensures the total elimination of all peaks.
- Stereo enhancer
- Digital Stereo Encoder
- Multiplex limiter (total respect of the ITU 412 standards)
- RDS / RDBS coder, basic or dynamic, using the UECP protocol via a data port.
- TXI, TX2
- Analogue I/O.
- AES / EBU E/S (32, 44.1, 48, 96 kHz), synchro AES I/O
- RS 232, TCP/IP ethernet, GPI/O

Driving the DBP2

The DBP2 comes with a very complete software link up whose graphic interface **MASTER GATE** runs under Windows[®] 2000 et XP. It can be remote controlled by modem or ethernet TCP/IP.

Upgrading the DBP2

Last, but not least, with the DBP2 your investment is assured as it can easily be upgraded to a DBP4, and other versions to come, by a mere update of the software. As with all IDT products the DBP2 can act as a host platform for a wide range of plug-ins.



Standard
INPUT

INPUT
FILTER

AGC
PROCESS

DYNAMIC
PROCESS

FINAL
E.Q

HF
LIMITER

FINAL
CLIPPER

Digital Band Processor 2:

IDT launches, at an unbeatable price, the latest product in its range

Get a true digital processor

Specifications

General specifications :

Frequency response : +0 / - 0.4dB, 10-20000Hz (Bypass mode).
System distortion : < 0.01% THD, de-emphasised
Signal to Noise : 92 dB unweighted, 20 Hz - 20 kHz
I/O Delay : ~5 milliseconds
Internal sample rate : 96 kHz
Internal resolution : 40 bit floating point
I/O resolution : 24 bit
Maximum Overshoot : 0.1 dB
Phase Response : Linear 20 Hz - 20 kHz
Process Architecture : Wide band AGC / 2 band Process / 2 band limiter / Final limiter APC® overdriven
DSP : 6 Sharc 21065,
Maximum number of Factory Presets : 30
Maximum number of User Presets : 60
Remote contact closure : 10 Presets
Compact Flash memory slot

Analogue Audio Input :

Configuration : Stereo
Impedance : > 6 kOhms
Type : Electronically balanced
Maximum Input Level : +25 dBu, for THD + N < 0.01%
Equivalent Input Noise: < - 84 dBu
Common Mode Rejection Ratio: 90 dB
Connector : Two XLR female
AD Conversion : 24 bit 128X oversampled

Analogue Audio Output :

Configuration : Stereo
Source impedance : < 1 Ohms
Type : Electronically balanced
Maximum Output Level :
+24 dBu, on 10 kOhms Load for THD + N < 0.01 %
+18 dBu on 600 Ohms Load for THD + N < 0.05 %
Signal to Noise : > 100 dB unweighted, 20 Hz - 20 kHz
Connector : Two XLR Male
DA Conversion : 24 bit 128X oversampled

Digital Audio Input :

Configuration : Stereo per AES/EBU (AES3), 16, 18, 20 or 24 bit resolution.
Impedance : 110 ohms
Sampling Rate : 32, 44.1, 48, 96kHz autodetect
Status bits : Input channel status is decoded for control.
Input User bits are optionally passed through the output
Connector : XLR female, EMI-suppressed
Filtering : RFI filtered. Effective 0.5-1000MHz

Digital Audio Output :

Configuration : Stereo per AES/EBU (AES3), 20 or 24 bits resolution.
Impedance : 110 ohms
Sampling Rate : Software selectable , free running at 32kHz +/- 10 PPM, 44.1kHz +/- 10 PPM, 48kHz +/- 10 PPM, 96kHz +/- 10 PPM.
Synchronisation mode : Internal free running or external or delivery mode for 32, 44.1, 48, 96kHz
Word Length : Selectable 18, 20, 24 bits.
Jitter : Less than 5 ns rms.
Status bits : Output channel status can be generated.
Input User bits are optionally passed through the output
Connector : XLR female, EMI-suppressed
Filtering : RFI filtered. Effective 0.5-1000MHz

Digital Sync Input / Output :

Configuration : Two mode, input to provide sync, Output to deliver sync
Impedance : 75 ohms
Sampling Rate for Input mode : 32, 44.1, 48, 96kHz Sampling Rate for Output mode : Software selectable . 32kHz +/- 10 PPM, 44.1kHz +/- 10 PPM, 48kHz +/- 10 PPM, 96kHz +/- 10 PPM.
Connector : BNC female,

Digital Sereo Generator :

Frequency Response : +/- 0.1 dB 20Hz - 15kHz
Configuration : Two independently controlled output
TX1 : Multiplex signal
TX2 : Programmable (multiplex or 19 kHz)
Source impedance : 75 ohms
Load Impedance : 75 ohms or greater
Level : Adjustable max 15 Vp-p (100% modulation ~ -3 dBFS)
Connector : BNC
Pre-emphasis : 50 or 75µs
Stereo separation : More than 90dB, 20Hz - 15kHz Main to Sub crosstalk, Sub to Main crosstalk : < -85 dB
Audio Filtering : 80 dB rejection at 19kHz
Pilot stability : +/- 0.2 Hz

RDS / RDBS :

Basic RDS/RDBS : PI, PS, AF, PTY, RT, RTC
Dynamic RDS/RDBS : via port data UECF (Universal Encoder Communication Protocol)
Data port : RS232 manual selection baud rate 9600 to 115200

Remote computer interface :

Configuration : Two RS 232
Connector : One Sub-D 9 pin female and one Sub-D 9 pin male on the back side and one Sub-D 9 pin female on the front panel
Baud rate : Auto selectable baud rate 9600 to 115200 bauds

Remote control

Configuration : Fully remote controllable by external modem or with the TCP/IP option
Rate : 9600 to 115200 baud

Remote control interface :

Configuration : 14 inputs contact closure directly selectable by software

Local Switch GPI/O :

Configuration : 16 inputs and 6 outputs software controlable

Compact Flash Memory :

Type : Compact flash
Configuration : 1 slot for save , recall and upgrade facilities

Power :

Voltage : 80 to 265 VAC, 50 - 60 Hz, 130 VA
Connector : IEC, EMI-suppressed
Safety Standard : CE / DBT

Environmental and Dimensions :

Operating Temperature : 0° to 50° C or 32° to 122° F
Humidity : 0 to 95% RH, non condensing
Size : 19", One rack unit high.
Weight : 6 Kg - 13.2 lb.

